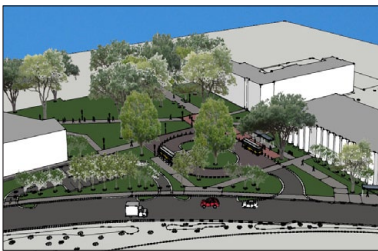




## GEORGIA INSTITUTE OF TECHNOLOGY TRANSIT HUB ATLANTA, GEORGIA



Georgia Institute of Technology is a well established institute of higher learning in Atlanta, Georgia. In 2010, GIT retained Southern Civil Engineers and LEUNG to design a new Tech Trolley drop-off area. The site selected for this transit hub project is located in the heart of the Georgia Tech's central campus, adjacent to the Student Center and at the crossroad of several pedestrian corridors traversing through this part of campus. The site is also one of the oldest areas on campus with a number of mature specimen trees of up to sixty-some inches in diameter. One of the major challenges of the site design is to be able to accommodate the various modes of transportation. This includes vehicular traffic, the Tech Trolley up to coach buses, pedestrian and bicycle users, and provide access to the various buildings that encircle the site.



As this is a long established area on campus, a web of underground utilities traverse the site; careful planning and design considerations were taken to resolve utility conflicts as well as ensuring the preservation of all the mature specimen trees. SCE and LEUNG team work together and closely coordinated the site plan to reduce grading and earthworks, and thus minimizing impact to the existing trees. The team also coordinated the design efforts with multiple GIT facilities and transportation departments to provide an accessible, safe and sustainable design solution.